



Electrical Outlet & Proper wiring  
Instruction Manual

# Warranty

The machine is insured against damage upon shipping. If your machine is damaged in any way when you receive it, you must retain all shipping materials and packing. Call our customer service department and report the damage immediately.

There is a 1 year warranty on all internal electronic parts. You must use dry gas in your machine and keep it indoors away from rain and moisture.

For more detailed warranty information, please to [http://longevity-inc.com/terms\\_and\\_policy.php](http://longevity-inc.com/terms_and_policy.php)

Customers who own machines that require warranty coverage should contact our warranty department by email at [help@longevity-inc.com](mailto:help@longevity-inc.com) to obtain a return authorization code.

Customers who own an out-of-warranty machine that require repairs should contact us for an estimate.

## Danger

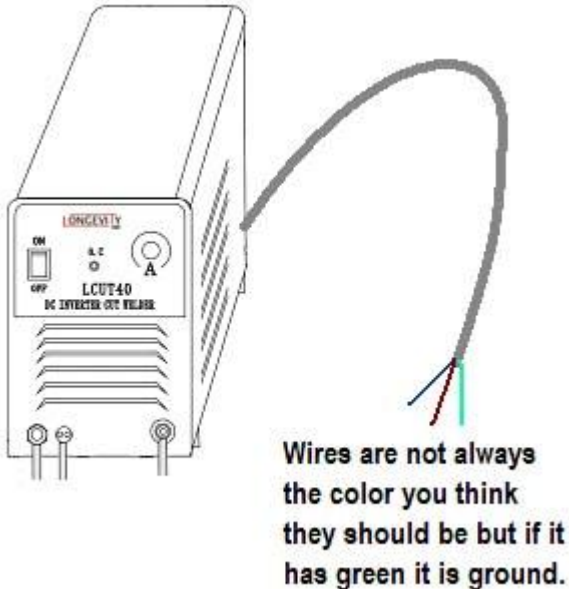
Do not attempt to wire or handle high voltage without proper training. Contact an electrician to help you install an electrical outlet or connect an electrical plug to your machine.

## Introduction

Regardless of which machine you have, it will require power to operate properly. Do not assume you know which wires to connect until you read this manual completely as colors may be deceiving.

All of the LONGEVITY Brand machines sold in the United States are either 110vac or 220vac. The 110vac machines will operate within 100v to 120vac at 50-60hz and the 220vac machines will operate within 200-240vac at 50-60hz. All machines are 1 phase unless otherwise stated. 1 phase means the power cord will have 1 ground wire and two hot wires. Connecting these wires properly is very important and if done improperly will void warranty and can cause damage to your machine and your outlet.

## Identify the Ground wire



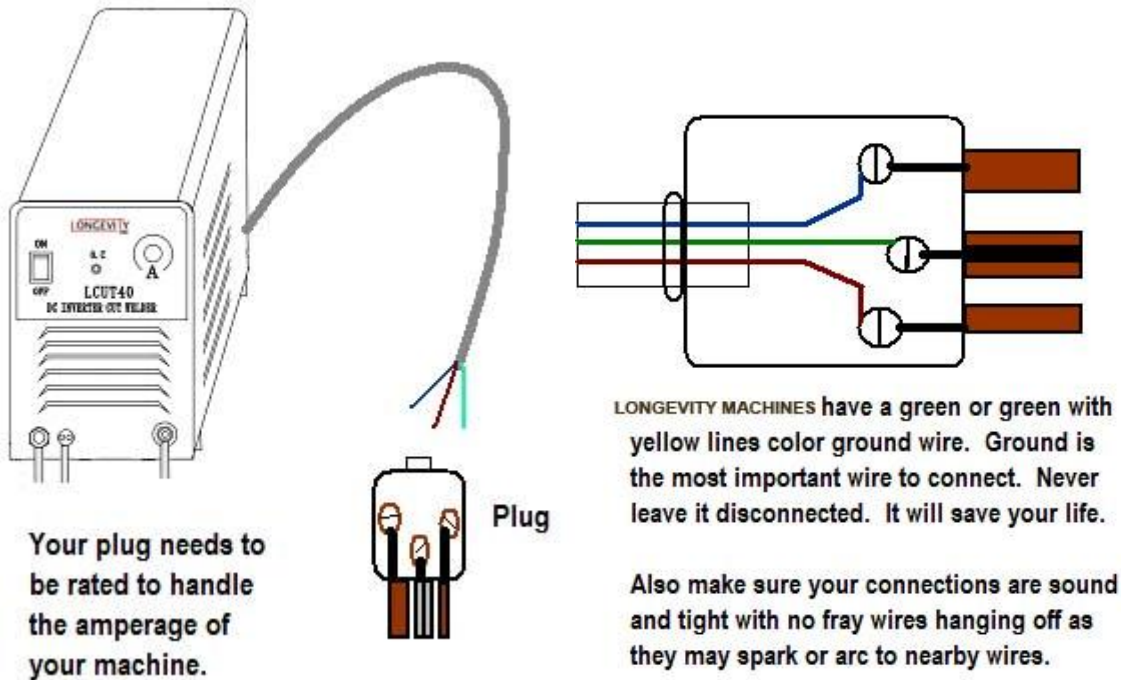
The ground wires on most LONGEVITY machines are dark green or green with yellow wiring combination.

Some are dark green with yellow line in them . Some of the machines have blue, dark green and dark red wires and it may be difficult to differentiate which wire is ground because the blue and dark green look similar. The best way to test for ground is to test the ohms between the machine chassis ground to the ground wire. You can also use a continuity meter to check. If the wire you choose causes the meter to light up, then odds are that it is correct. If you are color blind you should not be doing this. Cleaning off the wires also helps too. The insulation on the ends of the wire may get dirty and hard to see. As a last resort ask an electrician to help you determine which wire is ground. Please remember you will be wiring 110v the same way as you wire the 220v. For units that have 110v capability, you will wire the two hot wires together to the hot lead. The other wire will be ground.

### Note:

Improperly connecting the ground wire may cause the machine to turn on and the fan will turn on as well but it will not operate properly.

# Connecting the Plug



You will need to consult with an expert to find the proper plug for your machine.

First you will need to know the maximum amperage draw of your machine which should be in your manual. Write it down and go to the hardware store. Ask one of their electrical department associates for advice about which plug you will need unless you already know the type. It is a good idea to take a digital picture of your existing outlet to match up the plug you will need. Most plugs do not come with detailed instructions on how wire them. Ask the associate about this before you leave the store and take notes if needed.

The ground is the first wire you should connect in the plug. Next connect the two live wires. Generally it does not matter which one goes on which side. As a general rule of thumb it is said to connect blue on left and red on right, or black on left and white on right.

If you still need help, please give us a call or email us.

1-877-LONG-INC / 1-877-566-4462

Email: [help@longevity-inc.com](mailto:help@longevity-inc.com)